



Dear Church Family,

Here we are, after months of having our lives changed by an infectious disease. For most, the inability to have church in person is among many other losses. It's been a strange time for people all over the world. And it isn't over. We are still right in the middle of it. And this is all the bad news I wish to share about it. I'm naming what you already know.

While change is inevitable; grief and loss are part of change. It is something else. God creates possibilities within change for good. I'm especially grateful for living in such a creative way.

This has been one of the better summers in my recollection. In terms of life in the church I've worked harder and longer than I ever have before. We've had to reinvent so many ways of being church which were so easy in the past we could take them for granted.

And yet-- I notice the quality of time spent outdoors. While life was perhaps more busy, it also seemed to slow down. Michelle and I were able to linger over meals eaten outdoors. And it has been a lovely summer, weather wise.

I've missed seeing you in person. At the same time, we have had such great opportunities to connect and be community with new friends through online worship. Four church families have worshiped together while Michelle and I have been able to be present in each other's parish as never before. And in terms of God's creatures living creative lives, we are just beginning.

I do not know for certain what changes we will experience at this stage of our journey. I am confident God will continue to work with us and for us to bring about good in our lives and world. Thank you for joining and sticking with Michelle and me as we journey together. May God continue to nurture our hope and love.

Blessings,

Pastor Rob

October

2020



Bemidji United Methodist Church

| Sunday | Monday | Tuesday | Wednesday | Thursday | Friday | Saturday |
|--|--------|---------|---|---|--------|----------|
| | | | | 1 | 2 | 3 |
| | | | | 5:00- Community Table 5:30-Virtual Coffee on Zoom | | |
| 4 10:15-Coffee with Pastor Rob and Pastor Michelle 10:30-Worship | 5 | 6 | 7 1:00 -Staff Meeting 5:00- Community Table 6:30- Trustees Meeting | 8 1:30-Virtual Coffee on Zoom 4:00- SPRC 5:00- Community Table | 9 | 10 |

| 11 | 12 | 13 | 14 | 15 | 16 | 17 |
|---|--------------|----|--|--|----|--|
| 10:15-Coffee with Pastor Rob and Pastor Michelle 10:30-Worship | Columbus Day | | 1:00 -Staff Meeting 5:00- Community Table | 12 noon- P.E.O. 1:30-Finance Meeting 5:00- Community Table 5:30-Virtual Coffee on Zoom | | |
| 10:15-Coffee with Pastor Rob and Pastor Michelle 10:30-Worship | | | 1:00 -Staff Meeting 5:00- Community Table | 1:30-Virtual Coffee on Zoom 2-5:30pm- Stamping 5:00- Community Table 6:00- Church Council | | |
| 10:15-Coffee with Pastor Rob and Pastor Michelle 10:30-Worship | | | 1:00 -Staff Meeting 5:00- Community Table | 1:30-Virtual Coffee on Zoom 5:00- Community Table | |  Reformation Day |



COVID-19 Update



Friends in Christ,

As you know, this has been an intense season for our churches. But you have risen to the occasion by pivoting to move your ministry online. You have responded to the call for racial justice and played a key role in rebuilding our communities following the killing of George Floyd. You have been diligent in developing practices to keep your congregation safe amid COVID-19 by caring for one another and gathering in creative ways. I am so thankful for your perseverance and innovation in the face of these unrelenting challenges.

As we turn the page to fall, a time when we're used to kicking off a new year of programming and children's ministries, we find ourselves still in "Stay Safe MN" mode and needing to continue to significantly limit our in-person gatherings. Everything is different, and it looks like this will be our new normal for the foreseeable future. As we head into this new season, I want to offer some reminders and encouragement:

Pandemic fatigue is real, but we cannot relax in our efforts to keep people safe. With cold weather approaching, it will be tempting to think we can be the exception—that we can gather like we used to and no one will get sick. Unfortunately, there are tragic stories of church-related corona virus outbreaks from all over the country. Gathering indoors in groups is still a high-risk activity. It is critical that you, as leaders, have developed your COVID-19 preparedness plan in accordance with our phased re-gathering plan and that you hold to it for the sake of the most vulnerable in your midst. We are called to make our love for one another incarnational. We do this by protecting each other and our neighbors. If you and your church leadership team or council has made a thoughtful and prayerful decision to resume in-person worship, your preparedness plan needs to include:

- a. a requirement for masks to be worn by all persons**
- b. people staying at least six feet apart**
- c. strict adherence to the state-mandated capacity limits (we strongly recommend staying well below them)**
- d. no congregational singing**
- e. cleaning and sanitizing public spaces between each group gathering**

Christmas is coming. As painful as this is to think about, it is unlikely that we will be able to have a large number of people together, shoulder to shoulder, on Christmas Eve holding candles and singing "Silent Night." Take a moment to lament this loss. And then, remembering Mary and Joseph who left what was comfortable to go on a journey to Bethlehem, start planning for how you can help bring Christmas to your community in fresh and new ways. Things won't look and feel like they used to, but that was the case at Jesus' birth too—he was God's in-breaking in startling new ways. We have an important opportunity to try something completely different that reaches people in our mission fields in new ways.

Continue to be kind and generous to yourselves and one another. This is a hard time for all of us. Give yourself grace. We are all doing the best we can, and we are all making decisions based on our particular context. Be wise about how you steward your time, resources, and energy. Ask the tough questions that lead to clarity about where to invest and where to let go so that you stay true to your mission while continuing to adapt and refine your methods for growing in love of God and neighbor, reaching new people, and healing a broken world in this unique season of ministry.

I pray for you and our world daily. May we be people who offer light and hope to a weary world!

**Bishop Bruce R. Ough
Resident Bishop, Dakotas-Minnesota Area
The United Methodist Church**

BEMIDJI UNITED METHODIST CHURCH

CHURCH OFFICE HOURS

10:00 AM – 2:00PM (M – F)

Office Phone: 218-751-3503

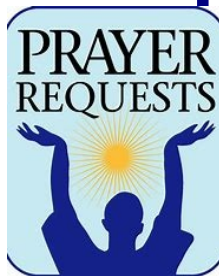
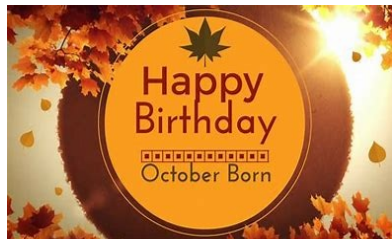
Pastor Rob Cell: 218-766-8744

Email Addresses: Church Office umcbji@paulbunyan.net
Pastor Rob: revrmkopp@gmail.com

Mailing Address: PO Box 607, Bemidji, MN 56619
Street Address: 924 Beltrami Ave. NW Bemidji, MN 56601

October Birthdays

Oct. 03- Charles Parson
Oct. 05- Erin Morehouse
Oct. 07- Selina Gilbertson
Oct. 07- Kristi Norland
Oct. 10- Emily Douglas
Oct. 10- Elizabeth Bellefy
Oct. 11- Tony Nicholson
Oct. 12- Albert Clark
Oct. 13- Judy Swearingen
Oct. 17- John Murray
Oct. 18- Dwayne Burghart
Oct. 18- John Nicholson
Oct. 23- Garrett Halverson
Oct. 24- Nancy Manley
Oct. 26- Vern Ditty
Oct. 28- Trish Nelson
Oct. 29- Piper Newago
Oct. 30- Deanna Nichols



Hi all—I hope everyone is staying healthy, happy and sane during these interesting times! Just a couple of things about the Prayer Chain:

We have continued to be very active with the Chain. I want to remind everyone that I can be contacted if you have a concern or request for prayer. Jan Grimm at 218-444-0209. The Chain is always confidential if you choose.

I would also like to invite anyone interested in joining the Chain to give me a call. I am a firm believer in the power of prayer and the more people praying, the more powerful those prayers are!

Thanks for considering—Jan Grimm



JUST A REMINDER....

Articles for the November Newsletter are due in to Karen no later than

9:00am on Monday, October 19, 2020

You may text, email or call her at
(218) 766-9700

Happy Anniversary

October 11, 1986- Randy and Carol Burg

**October 11, 1997- Darren and Denielle
Kimble**

**October 12, 1952- Romaine and Darlene
Wilson**

**October 16, 1965- Ken and Deanna
Nichols**



If an Anniversary was missed on the list,
please contact Karen in the office.

...at Neilson Place: Jean Slinkman

...at Trillium: Judy Comstock

...at Windsong: Wag Collins, Bert Clark, Dotty Naramore

...at Baker Park: Kathleen Magsam

...at Havenwood Care Center: Patty Boyer, Mary
Conner, Vern Ditty and Betty Howard

...at Goldpine: Marjory Beck, Laura Hays, Ruby
Hausauer, Helen LeClaire

...Noli and family

...For all the volunteers giving of their time during COVID

...BUMC members, to get through COVID and
be able to worship together soon

...David Swenson recovering from knee surgery at Mayo
at least thru September

...for all the committees who have been working hard
to keep the church functioning.

**Especially the trustees who've taken on the
responsibilities of cleaning the church
inside and taking care of the grounds
outside.**



Offerings and Misc. Received for September 2020

General Offering.....September 1, 2020 **\$3,121.17**

September 15, 2020 **\$3,346.00**



On-line Giving.....**\$1,505.00**

for September

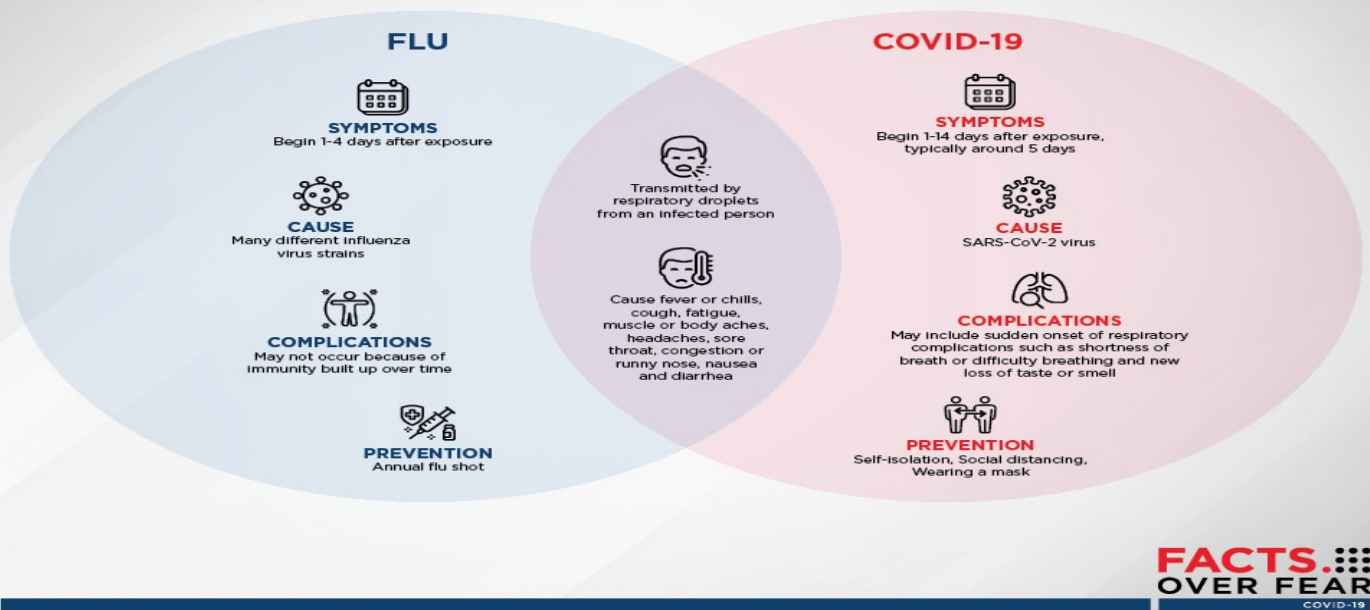


MAC/DOE Chart For Reopening- compiled by Kari Knudson

| Minnesota Annual Conference | Community Spread | BUMC | Number of Cases per 10,000 over 14 days Beltrami County | Minnesota Dept of Education |
|--|---|----------------------|---|---|
| Red State order for all people to shelter at home, with only essential businesses permitted to open | Infections are rising, and hospital capacity is a concern. | | 50+ | Distance for all |
| Orange Businesses can open with some restrictions. People are still encouraged to limit movement to essential needs and remote work is still urged. | Infection rates are still high but hospital capacity has ramped up to better meet demand. | | 20-49 | Hybrid for elementary Distance for secondary |
| Yellow Some restrictions for businesses and gatherings are still in place | The infection rate is leveling off or decreasing | BUMC IS HERE! | 10-19 | Hybrid for all |
| Blue Somewhat larger gatherings can take place with capacity restrictions and physical distancing requirements | COVID-19 is still circulating but the infection rate is low. | | 0-9 | In person elementary Hybrid secondary |
| Green There are no limitations on group size | COVID-19 is no longer considered a risk. | | | In person learning for all students |

A good source to keep up on COVID numbers for the Bemidji area is **BELTRAMI COUNTY EMERGENCY MANAGEMENT**. Their Facebook page is read the easiest. The second great source for our area is **BEMIDJI NOW**. This on-line page is run by Paul Bunyan Broadcasting. (KB101, KZY 95.5, Z99, KBUN AM and FM) They also have a Facebook page.

FLU vs COVID-19



In addition to walk-in flu shots, Sanford Bemidji is offering **drive-up flu shots on Wednesdays**. You will need to make an appointment if you prefer this drive-up method. **(218) 333-5000**. They did list a direct number, but when I tried calling, no one would answer.

My suggestion is to call Sanford's main number listed above. Ask how you can get your drive-up flu shot. More than one person can come by vehicle.

The chart above was provided by Bemidji Sanford Occupational Health on 5th Street. They also are giving flu shots, but not drive-up. Most pharmacies have flu shots available as well.



Have you had your picture taken for the new BUMC Directory? You may also submit a current photo. Email Deborah Davis or text and leave a message: msdeborahadavis@yahoo.com or (218) 214-3581

Please note that there is an "a" after Deborah's first name. There are many "a's" in her email address.

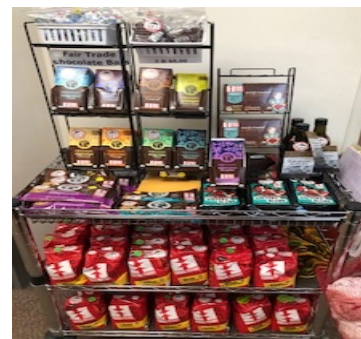


A Big Thank You! to our September Meals on Wheels volunteers: Randy Burg, Carol Nielson, Sandra Krantz, Vic Mosser, Tony & Carla Nicholson, Barbara and Marshall Johnston, Gerry Manley, and Terry Thomas. We appreciate your continued support of this mission project of our church. If you would like to join our team, or have questions about volunteering, please call Coordinator Terry Thomas: 218-444-9580

Fair Trade News.....

We still have coffee and chocolate in our close out sale, as we transition from the Sunday "coffee cart" to a buying club. On the inventory list are plenty of bags of chocolate minis, both milk and dark chocolate varieties are available: close out price, \$3.00 (regular price: \$4.00). Perfect for the Halloween season.

Please call Terry Thomas, 444-9580 for the current inventory, price & delivery information.



BUMC Community Table News

Community Table on Wednesday and Thursday Nights, takes a hard working village. George and Pam Stowe order the food and find volunteers for this great service at BUMC. Jane Killgore coordinates the food/menu for Wednesday and Thursday nights from 5-6pm. All are welcome to pick up a meal outside during COVID. **THANK YOU VOLUNTEERS FROM ALL OF US AT BUMC!!**



George Stowe

George Stowe moving pallets of food delivered to BUMC on Tuesday 9-8-20. Please contact George if you can volunteer to help him move this food to the basement. The pile was much higher before this picture was taken. George (218) 760-6934



The ladies serving Chili at Thursday Night's Community Table. (l to r) Deb Frable, Dawn Dahl and Jane Killgore. 9-9-20



United
Methodist
Women
FAITH - HOPE - LOVE IN ACTION



Bemidji Methodist Women

The BMW Executive Board agreed to NOT have meetings in September, October and November. Our December Brunch is on hold for now. It is possible we will not meet in December but schedule The Brunch for another month. Stay tuned.

Nut Sales—we will NOT be having our nut sales this fall. Hopefully we will be able to continue these sales in the fall of 2021. We are disappointed as many of you are. We thank all of you for supporting us in these sales and expect to see you in 2021.

~ BMW President Pat Rice



Hello from the office! It has been a busy September. Currently, I'm in the office preparing for payroll and meeting with Bob Ballard to pay bills. As you can see, a new Voyageur has come out. I'm feeling much more confident about my job duties. So, now that I've (mostly) caught up, watch for another envelope from the church with your 3rd Quarter Giving Statement. Please notify me if something seems off so we can fix it before the end of the year tax statements. Can't wait to see you all soon in person.

~~ Karen/Bubbles UMC Office

**October 2020 is here!
Let's make this Halloween
a happy one for kids who've been
through too much.**

**We're asking for candy and/or monetary
donations for church distribution through
Community Meals**

**Please text or email Deborah to arrange
pick up. Check donations can be mailed
but must be received by October 15th**

THANK YOU!

**Deborah: msdeborahAdavis@yahoo.com or
text 218-214-3581 or mail:
BUMC, 924 Beltrami Ave NW, Bemidji**

October 2020 is here!

Let's make this Halloween a happy one for kids who've been through too much. We're asking for candy and/or monetary donations for church distribution through Community Meals. Please text or email Deborah to arrange pick up.

Check donations can be made out to: BUMC Treat Fund, and mailed but must be received by October 15th.

~~~~~THANK YOU!! Deborah~~~~~

**EMAIL: msdeborahadavis@yahoo.com**

**PHONE: Text 218-214-3581**

**MAIL: BUMC, Attention: Deborah  
924 Beltrami Ave NW  
Bemidji MN 56601**



**United Methodist Church**  
**924 Beltrami Ave.**  
**PO Box 607**  
**Bemidji, MN 56619-0607**

Office number: (218) 751-3503  
**Karen's Phone- (218) 766-9700**  
Email: umcbji@paulbunyan.net

Web Site: [www.bemidji.umn.org](http://www.bemidji.umn.org)

October 2020 VOYAGEUR  
Published Monthly  
Welcome to October 🍂

NOTICE:  
Important Calendar  
Change



Church Family Check-In is trying a different schedule for the month of October. Those that work until 5pm, have shown interest in a later Zoom Family Check-In. So, beginning this month, please notice we will meet at 5:30pm on the first and third Thursday of the month. Second and fourth Thursday will meet at 1:30pm.

open hearts  
open minds  
open doors



*The People of the United Methodist Church*

Church Staff

**Reverend Rob Kopp**  
Pastor

**Karen Thompson "Bubbles"**  
Office Administration

**Deborah Davis**  
Volunteer & Events Coordinator

**Trustees**  
Custodial

**Leisa Bragg**  
Accompanist

**Chancel Choir Director**